

Site Add :- Survey No. 22/2 and 24/1 Rees, Taluka - Khalapur.

Navigation Link- <https://goo.gl/maps/s7kQU9sJWSw>



Head Office :- 1402, Bhumiraj Costarica, Plot no. 1 & 2, Sector 18, Palm Beach Road, Sanpada, Navi Mumbai- 400 705.
 Mob No. 9699 902 902 , 750 629 7771 , 750 629 7772.
 E-mail - choice@choicegroup.co web site - www.choicegroup.co



Ambe Smruti
 at Rees

welcome to
AMBE SMRUTI
 an indulgence called life.



Project By



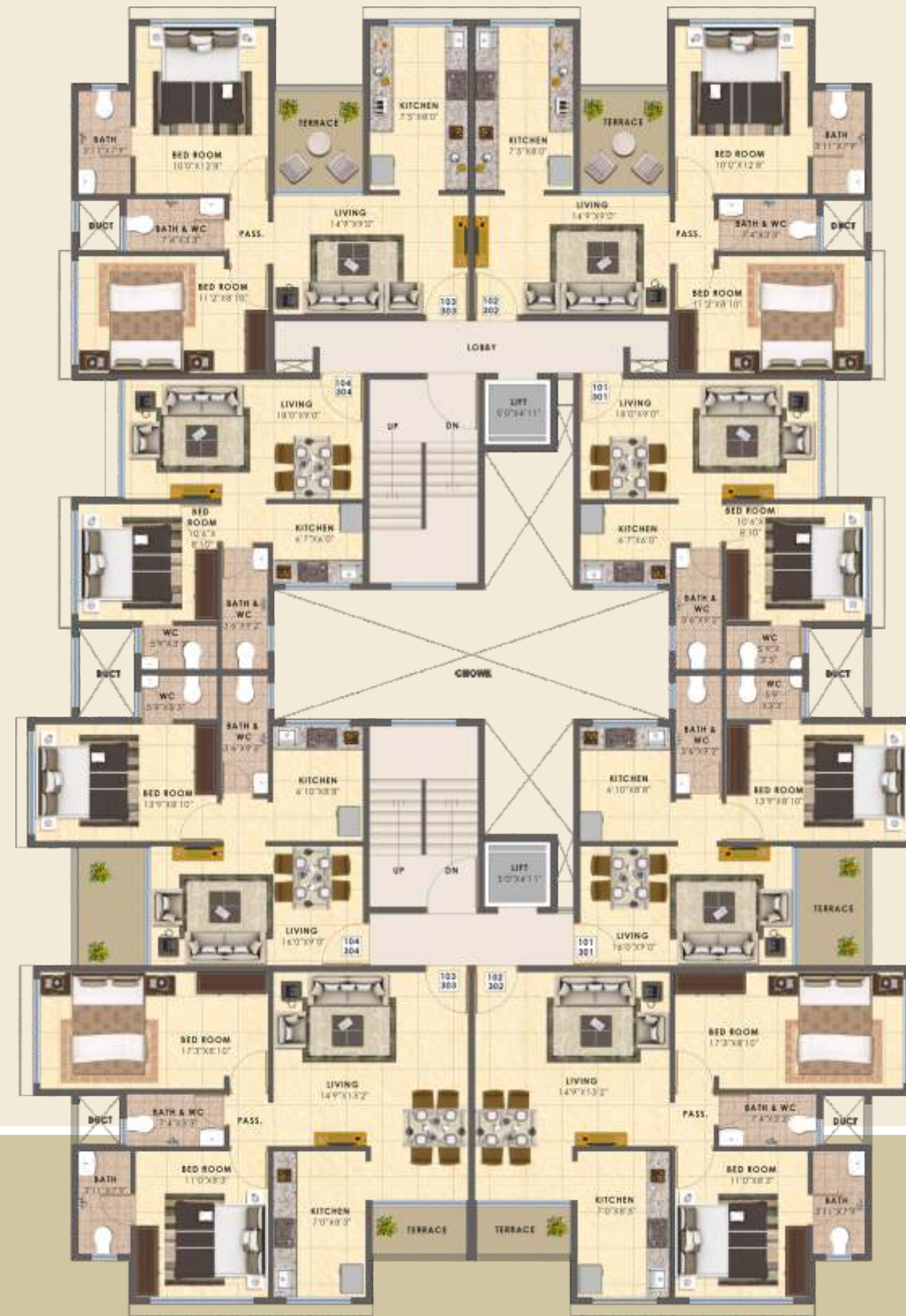
Developers
CHOICE BUILDCON LLP
 Navi Mumbai.

Architect
RAJESH R.C
 Navi Mumbai.

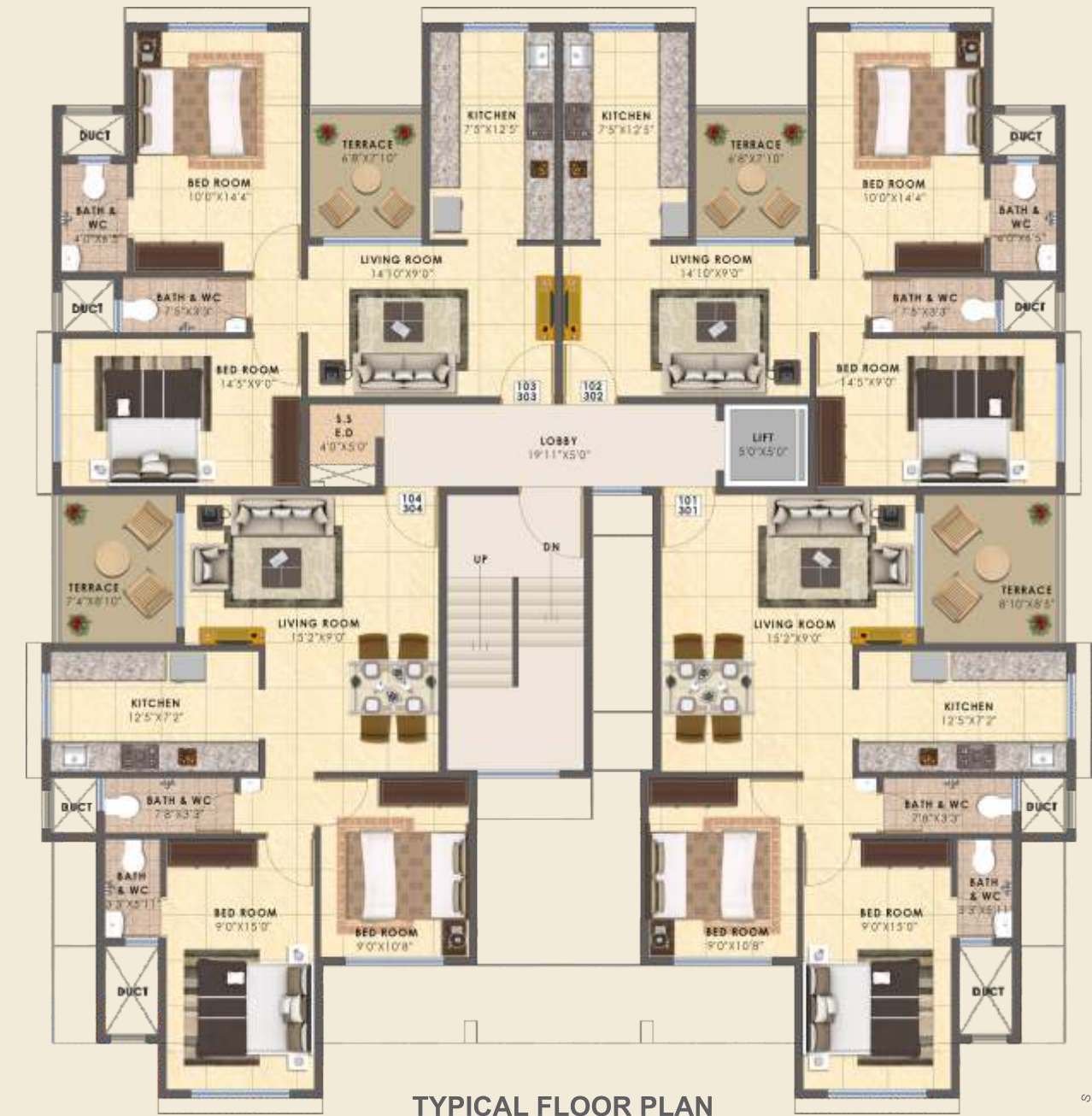
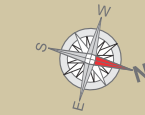
R.C.C. Consultant
CSE CONSULTANTS
 Mumbai

Baseline Designs :- 022 2530 3657

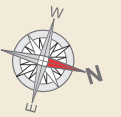
Disclaimer: All plans, drawings, amenities, facilities etc. are subject to the approval of the respective authorities and would be changed, if necessary. The discretion remains with the developer. All rendering, floor plans, pictures and maps are the artist's conceptions and not actual depictions of the building, its walls, roadways or landscaping. This leaflet is for guidance purpose only and not a legal document. This leaflet should also not be reproduced, copied or made available to others in any form of transmission. The Design & specifications depicted in the leaflet are subject to change without prior notice. Proposed development as mentioned in the leaflet is subject to approval of competent authorities.



TYPICAL FLOOR PLAN
A TYPE



TYPICAL FLOOR PLAN
B TYPE



Internal Amenities

Flooring : Vitrified flooring by a reputed brand for the entire Apartment.

Kitchen : Granite kitchen platform with S.S. sink.

Paints : Plastic paints on all walls.

Door : Laminated flush main door with elegant hardware fittings.

Window : Powder coated aluminum sliding window with marble framing.

Plumbing : Concealed plumbing with ISI quality CP fittings.

External Amenities

Elevation: Attractive Elevation.

Garden : Landscape garden and well equipped children play area.

Parking : Adequate space for parking.

Lobby : Decorative entrance lobby.

Electrical : Concealed copper wiring with modular switch fitting and circuit breaker.

LIFT : Schindler make Elevators.

Club : Club House with Indoor play area.

